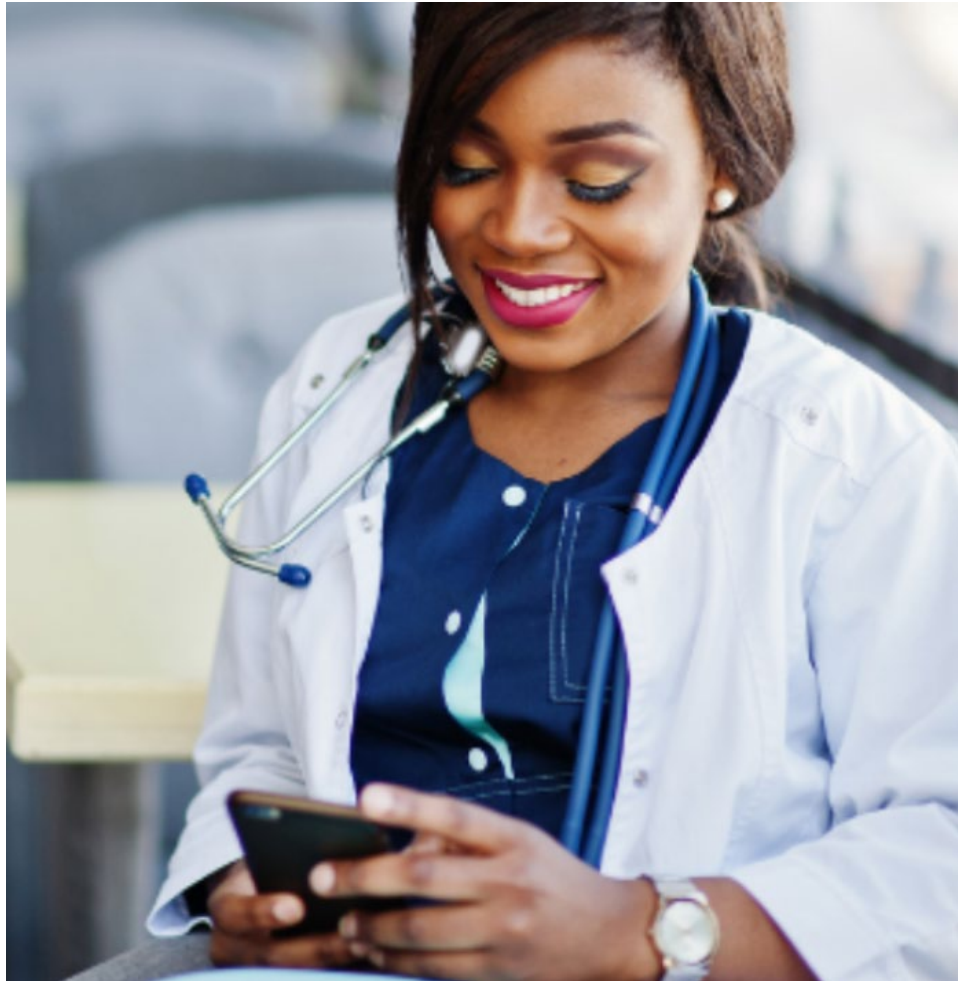




Healthcare Employees Federal Credit Union



About Us

Healthcare Employees Federal Credit Union (HEFCU) is the full-service, not-for-profit financial institution dedicated to improving the lives of New Jersey's healthcare employees. With a wide selection of low-rate loans, free Checking, convenient online and mobile banking and nationwide account access; we're working hard to improve the financial health of those that work tirelessly to improve our physical and mental health.

You can join the credit union by opening a Primary Savings with an initial deposit of at least \$10. Your Primary Savings establishes your membership with HEFCU and allows you to take advantage of all the accounts, loans and services we have to offer.



Join



Rates